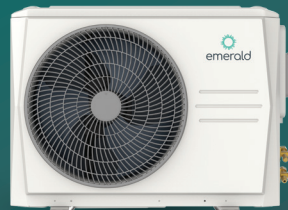


Hot Water Heat Pumps and Air Conditioning





A true energy efficiency company

At Emerald we're on a mission to innovate change by engineering solutions that cost people and the planet less.

We're proudly Australian. Founded, owned and operated from Sydney's Northern Beaches since 2006.

As a leading manufacturer of efficient, smart, connected hot water and HVAC solutions, our aim is to provide solutions engineered to empower everyday Australians to live sustainably, with our commitment to efficiency being at the heart of everything we do.

Engineered for efficiency

We develop with efficiency at the heart of everything we do. Creating products that are technologically superior, last longer, perform better and consume less energy.

Superior technology

Using advanced DC technology, our systems offer outstanding performance, efficiency and reliability.

Solar Soaker

Unique to Emerald App, Solar Soaker enables customers to benefit from surplus solar, using it to heat, cool and create hot water in their home for free.

Wi-Fi connectivity

Customers will love the convenience of smart control through Emerald App to monitor on the go and increase savings.

Low GWP

R290 delivers superior performance and better efficiency with a low GWP 3.

Versatile solutions for every home

Emerald solutions seamlessly integrate into both modern and traditional homes, ensuring efficient performance in any installation scenario.

Sales support

Our Australian based sales and account management team are experts in our products, and they will help you become experts too.

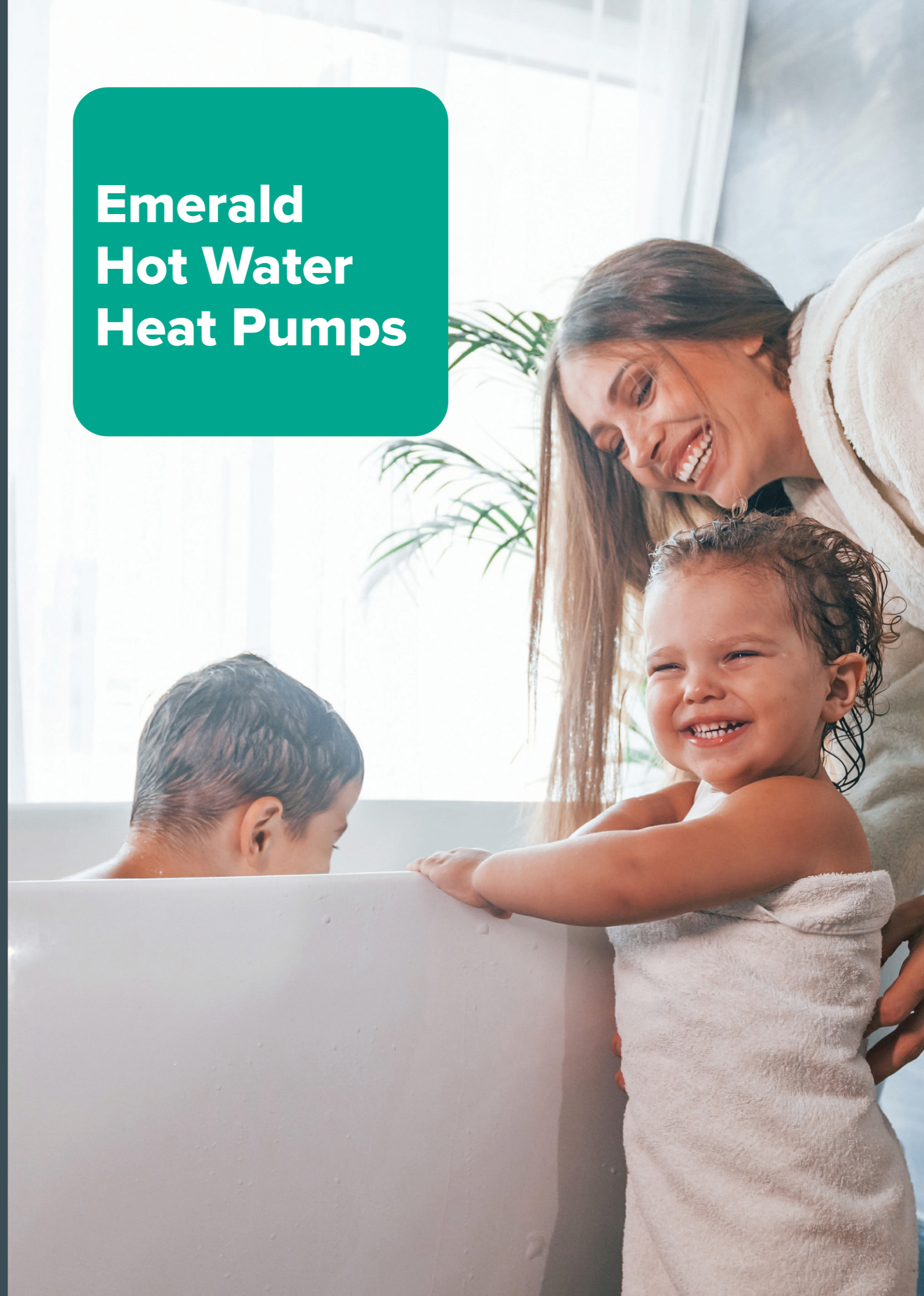
Tech support

Our Australian managed tech team are here to help you install, troubleshoot and assist with warranty claims. Work together over the phone, through online video tutorials and educational resources.

Engineered for Australia

Our products are designed by experts to maximise efficiency in Australia's unique climate.

Emerald Hot Water Heat Pumps



Hot Water Heat Pump All-In-One Select

- Available in: 220L, 270L
- Built in Wi-Fi for smart control
- Exceptional efficiency
- Higher than average recharge rates
- Optional built-in back up heater



R290 high efficiency

An entirely natural refrigerant with a low Global Warming Potential (GWP) of 3.



Plug and play

Power cables come pre-connected for easy installation.



Boost mode

Use Emerald App to quickly heat water when demand spikes.



Emerald App compatible

Manage and monitor hot water usage.



Performs from -7°C to +46°C

Designed to perform in Australia's extreme climate.



Galvanised sheet metal

Outer casing.

Model	HPA1-S220E	HPA1-S220	HPA1-S270E	HPA1-S270	HPA1-S320E*	HPA1-S320*
Water tank volume	220L		270L		320L	
Optional running modes	Standard / Boost / E-Heater	Standard / Boost / E-Heater	Standard / Boost / E-Heater	Standard / Boost / E-Heater	Standard / Boost / E-Heater	Standard / Boost / E-Heater
Unpacked dimension	600*600*1750mm	600*600*1750mm	600*600*1970mm	600*600*1970mm	600*600*2050mm	600*600*2050mm
Packed dimension	650*680*1870mm	650*680*1870mm	650*680*2090mm	650*680*2090mm	650*680*2170mm	650*680*2170mm
Net weight	118kg	118kg	132kg	132kg	146kg	146kg
Gross weight	126kg	126kg	141kg	141kg	154kg	154kg

*320L model arriving end 2025

Hot Water Heat Pump All-In-One Pro

- Available in: 220L, 270L, 320L
- Built in Wi-Fi for smart control
- Exceptional efficiency
- Residential and commercial
- Higher than average recharge rates
- Optional built-in back up heater



Premium DC technology

DC technology increases efficiency by managing compressor speed and output.



R290 high efficiency

An entirely natural refrigerant with a low Global Warming Potential (GWP) of 3.



Quiet operation

Producing less than 39dB(A)* of sound at 3m distance - similar to light rain.



Boost mode

Use Emerald App to quickly heat water when demand spikes.



Performs from -7°C to +46°C

Designed to perform in Australia's extreme climate



Plug and play

Power cables come pre-connected for easy installation.



Premium materials

Carbon steel tank with diamond enamel coating and galvanised sheet metal outer casing.



Emerald App compatible

Manage and monitor hot water usage.

Model	EE-HWS-A1-220E	EE-HWS-A1-220	EE-HWS-A1-270E	EE-HWS-A1-270	EE-HWS-A1-320E	EE-HWS-A1-320
Water tank volume	220L		270L		320L	
Optional running modes	Standard / Silent / Booster / E-Heater	Standard / Silent / Booster	Standard / Silent / Booster / E-Heater	Standard / Silent / Booster	Standard / Silent / Booster / E-Heater	Standard / Silent / Booster
Unpacked dimension	600*600*1598mm	600*600*1598mm	600*600*1826mm	600*600*1826mm	600*600*2050mm	600*600*2050mm
Packed dimension	650*680*1730mm	650*680*1730mm	650*680*1956mm	650*680*1956mm	650*680*2170mm	650*680*2170mm
Net weight	118kg	118kg	132kg	132kg	146kg	146kg
Gross weight	126kg	126kg	141kg	141kg	154kg	154kg

*Sound calculated at 3m distance using inverse square law.

Hot Water Heat Pump All-In-One Ultra

- Available in: 270L, 320L
- Built in Wi-Fi for smart control
- Exceptional efficiency
- Residential and commercial
- Higher than average recharge rates
- 5-inch colour touchscreen controller



DC

Premium DC technology

DC technology increases efficiency by managing compressor speed and output.



R290 high efficiency

An entirely natural refrigerant with a low Global Warming Potential (GWP) of 3.



Quiet operation

Producing less than 38dB(A) of sound at 3m distance - similar to light rain.



Boost mode

Use Emerald App to quickly heat water when demand spikes.



Performs from -7°C to +46°C

Designed to perform in Australia's extreme climate



Premium control panel

5 inch colour touch screen.



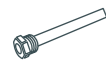
Stainless steel

Outer casing.



Emerald App compatible

Manage and monitor hot water usage.



Maintenance free anode

Standard anode plus electric anode.



High performance

Larger element for efficient kW heating power.

Model	HPA1-U270E	HPA1-U320E
Water tank volume	270L	320L
Optional running modes	Standard / Silent / Booster / E-Heater	Standard / Silent / Booster / E-Heater
Unpacked dimension	600*600*1953mm	600*600*2187mm
Packed dimension	650*680*2081mm	650*680*2415mm
Unpacked weight	140kg	157.5kg
Gross weight	155kg	173.5kg

Hot Water Heat Pump Split System 300L

- Available in 300L
- Exceptional efficiency
- Ideal for commercial installs
- Generous energy saving certificates when installed commercially



DC

Premium DC technology

DC technology increases efficiency by managing compressor speed and output.



R290 high efficiency

An entirely natural refrigerant with a low Global Warming Potential (GWP) of 3.



Silent mode

Reducing the system's sound output while still efficiently heating water.



Boost mode

Use the control panel to quickly heat water when demand spikes.



Performs from -15°C - +46°C

Designed to perform in Australia's extreme climate



High volume hot water

Commercial solution to handle the demands of gyms, salons, cafés and more.



Quick connection

No vacuum process required.

Model number		HPRX300E-1	
Outdoor Unit	Dimension	Unit dimension (L*W*H)	804*327*555mm
		Packing dimension (L*W*H)	845*390*630mm
	Net weight	27kg	
Refrigerant	Type	R290	
	Charged volume	470g	
	Tank volume	300L	
Water Tank	Electric heater	Capacity	4.2kW
		Power supply	220-240V/1/50 V/N/Hz
	Dimension	Unit dimension (Ø*H)	580*580*1735mm
		Packing dimension (W*D*H)	1835*690*670mm
Net weight	106kg		

Emerald Air Conditioning



Air Conditioning Split System Select

- Available in 2.5kW, 3.5kW, 7.2kW, 7.6kW and 9.9kW
- Residential and small commercial
- Exceptional efficiency



Premium DC technology
For superior performance and efficiency.



Up to 30% more efficient
Than standard inverter AC split system technology.



Anti-corrosion protection
Outdoor unit components features additional protection from the elements.



Lightweight indoor unit
Easier handling and mounting for faster installs.



Rapid cooling
Up to 40% increase in cooling capacity per minute.



Emerald App compatible
Manage and automate temperature demands via Emerald AC Link.

Model		ACSS25	ACSS35	ACSS72	ACSS76	ACSS99
Cooling capacity (kW)	Outdoor Unit	2.5	3.5	7.2	7.6	9.9
	Indoor Unit	3.2	3.7	7.5	9.6	11.5
Dimensions WxHxD (mm)	Outdoor Unit	780×540×260	810×585×280	900×750×340	900×750×340	900×1170×320
	Indoor Unit	850×270×208	850×270×208	1131×315×238	1131×363×276	1368×380×282
Weight (kg)	Outdoor Unit	30	33	52	52	81
	Indoor Unit	9	9	13	18.5	24

Air Conditioning Multi-Head Pro 12.6kW

- Outdoor unit available in 12.6kW
- Indoor units available in 2.5kW, 5.3kW and 7.1kW
- Connect up to 5 indoor units
- Residential and small commercial
- Exceptional efficiency
- Simple installation
- Competitive price point



RAC

Easy temperature control

Reverse Cycle (RAC) technology. Ideal for simple, seamless temperature control.



Multiple connections

Connect 1 to 5 indoor units.



Easy install

Compact outdoor unit, lightweight indoor unit.



Eco mode

Reduces power consumption by up to 30%.



Sleep and quiet modes

Quiet operation when your customers need it most.



No welding or brazing

Refrigerant piping with flared connections.



Smart mode

The air conditioner auto-adjusts to the ideal room temperature.



4 Sleep modes

Preset across an 8 hour curve to ensure restful night for all.



Emerald App compatible

Manage and automate temperature demands via Emerald AC Link.

Model	ACR126U (outdoor unit)	ACR25W (indoor unit)	ACR53W (indoor unit)	ACR71W (indoor unit)
Cooling capacity (kW)	12.6	2.5	5.3	7.1
Heating capacity (kW)	14.5	3.1	5.4	7.2
Dimensions WxHxD (mm)	950x1050x340	815x270x212	915x315x235	1085x315x235
Weight (kg)	90	8.5	12.5	13.5

Air Conditioning Multi-Head Ultra 18.1kW

- Outdoor unit available in 18.1kW
- Indoor units available in 2.8kW, 3.6kW, 4.5kW, 5.6kW, 7.1kW and 8.4kW
- Connect up to 11 indoor units
- Greater long-term energy savings and efficiency
- Residential and small commercial
- Single piping pair installation
- Refrigerant piping with flared connectors
- Long term savings for customers



VRF

Easy temperature control

Variable Refrigerant Flow (VRF) technology. Designed for advanced and scalable multi-zone applications.



Multiple connections

Connect up to 11 indoor units.



Easy install

Compact outdoor unit, lightweight indoor unit.



Eco mode

Reduces power consumption by up to 30%.



Sleep and quiet modes

Quiet operation when your customers need it most.



Emerald App compatible

Manage and automate temperature demands via Emerald AC Link.



Built-in drip tray

Secondary tray not required.



No welding or brazing

Refrigerant piping with flared connections.

Model	ACV180U (outdoor unit)	ACV28W (indoor unit)	ACV36W (indoor unit)	ACV45W (indoor unit)	ACV56W (indoor unit)	ACV71W (indoor unit)	ACV84W (indoor unit)
Cooling capacity (kW)	18.1	2.8	3.6	4.5	5.6	7.1	8.4
Heating capacity (kW)	20.4	3.6	4.0	5.4	6.7	8.2	8.4
Dimensions WxHxD (mm)	980x1080x360	845x270x203		960x315x230	1120x315x230		
Weight (kg)	97	9.5	9.5	13	14.5		

Air Conditioning Multi-Head Ultra 20kW

- Outdoor unit available in 20kW
- Indoor units available in 2.8kW, 3.6kW, 4.5kW, 5.6kW, 7.1kW and 8.4kW
- Connect up to 11 indoor units
- Greater long-term energy savings and efficiency
- Residential and small commercial
- Single piping pair installation
- Refrigerant piping with flared connectors
- Long term savings for customers



VRF

Easy temperature control

Variable Refrigerant Flow (VRF) technology. Designed for higher efficiency and longevity.



Multiple connections

Connect up to 11 indoor units.



No welding or brazing

Refrigerant piping with flared connections.



Eco mode

Reduces power consumption by up to 30%.



6 fan speeds

To suit various indoor conditions and reduce noise levels.



Emerald App compatible

Manage and automate temperature demands via Emerald AC Link.



Corrugated fin

Design boosts heating capacity by 10%.



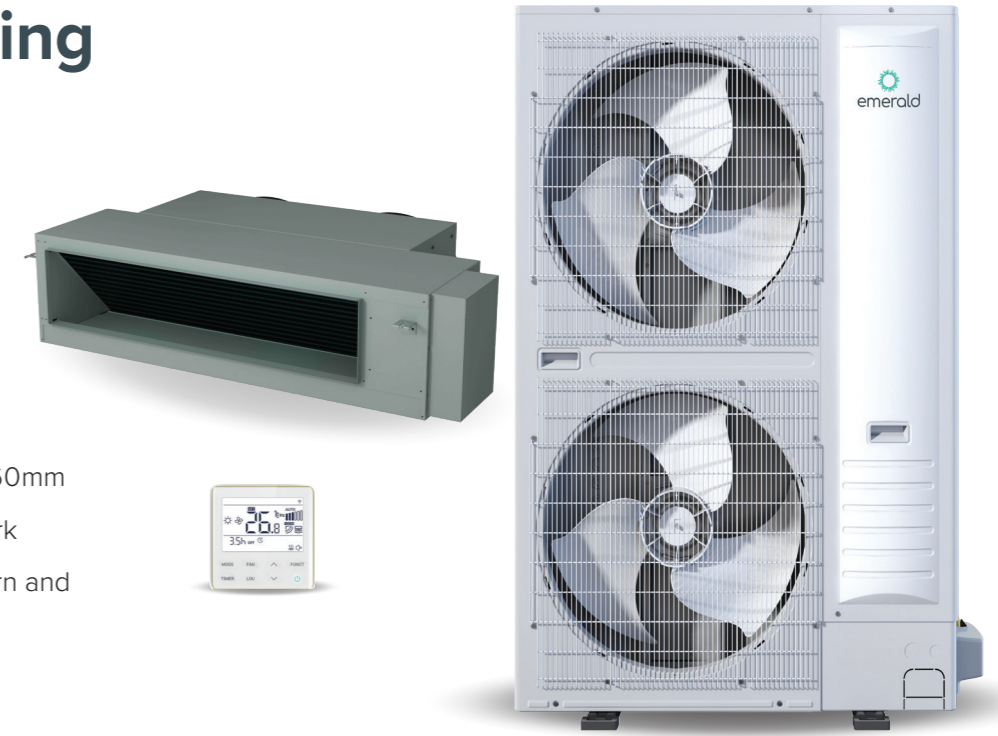
Sleep and quiet modes

Quiet operation when your customers need it most.

Model	ACV200U (outdoor unit)	ACV28W (indoor unit)	ACV36W (indoor unit)	ACV45W (indoor unit)	ACV56W (indoor unit)	ACV71W (indoor unit)	ACV84W (indoor unit)
Cooling capacity (kW)	20.0	2.8	3.6	4.5	5.6	7.1	8.4
Heating capacity (kW)	26.0	3.6	4.0	5.4	6.7	8.2	8.4
Dimensions WxHxD (mm)	1250×1650×440	845×270×203		960×315×230	1120×315×230		
Weight (kg)	165	9.5		13	14.5		

Air Conditioning Ducted Pro 16kW

- Outdoor unit available in 16kW
- Exceptional efficiency
- Residential and commercial
- Low profile indoor unit of only 360mm
- Option to reuse existing ductwork
- Compact indoor unit suits modern and traditional ceiling spaces
- Competitive price point



RAC

Easy temperature control

Reverse Cycle (RAC) technology. Ideal for simple, seamless temperature control.



Corrugated fin

Design boosts heating capacity by 10%.



Easy install

Indoor unit separates for easy install.



High static pressure

Engineered for stronger airflow in longer ductwork.



3 fan speeds

To suit various indoor conditions and reduce noise levels.



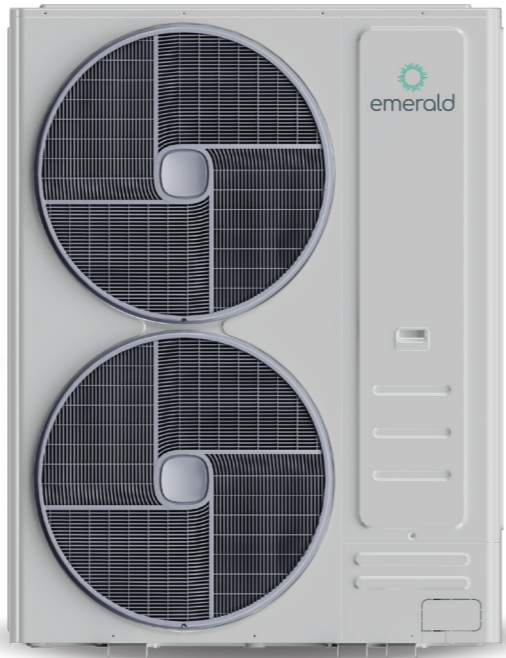
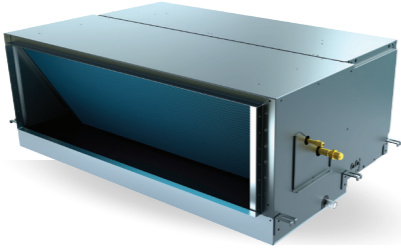
Emerald App compatible

Manage and automate temperature demands via Emerald AC Link.

Model	ACR160U (outdoor unit)	ACR160D (indoor unit)
Cooling capacity (kW)	16.0	16.0
Heating capacity (kW)	18.9	18.9
Dimensions WxHxD (mm)	975×1460×330	1520×360×820
Weight (kg)	98	66

Air Conditioning Ducted Ultra 20kW

- Outdoor unit available in 20kW
- Greater long-term energy savings and efficiency
- Residential and commercial
- Option to reuse existing ductwork
- Long term savings for customers



VRF

Easy temperature control

Variable Refrigerant Flow (VRF) technology. Designed for higher efficiency and longevity.



Corrugated fin

Design boosts heating capacity by 10%.



Easy install

Indoor unit separates for easy install.



Built-in drip tray

With float switch. Secondary drip tray not a requirement.



6 fan speeds

To suit various indoor conditions and reduce noise levels.



No welding or brazing

Refrigerant piping with flared connections.



High static pressure

Engineered for stronger airflow in longer ductwork.



Sleep and quiet modes

Quiet operation when your customers need it most.



Emerald App compatible

Manage and automate temperature demands via Emerald AC Link.

Model	ACV200U (outdoor unit)	ACV200D (indoor unit)
Cooling capacity (kW)	20.0	20.0
Heating capacity (kW)	26.0	26.0
Dimensions WxHxD (mm)	1250x1650x440	1300x470x890
Weight (kg)	165	84.5

Emerald Connectivity



Turn every install into a smart solution

Benefit from Emerald connectivity

Emerald's smart tech is a smart upsell that will bring your customers more value, while costing them and the planet less.

Emerald App

With Emerald App customers can monitor their energy usage in real-time, enabling significant savings by accessing this information anytime, anywhere. Additionally, the app's Smart Actions automate the system settings, enhancing efficiency and reducing electricity usage.



Free hot water, heating and cooling with Solar Soaker

Solar Soaker, available only in the Emerald App, automatically redirects excess solar to power Emerald air conditioners or hot water heat pumps - turning surplus energy into free heating, cooling, and hot water.

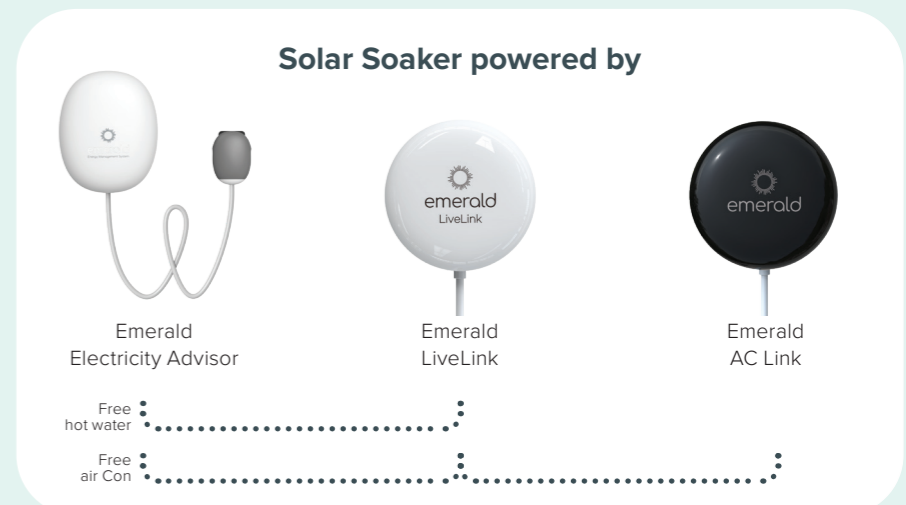
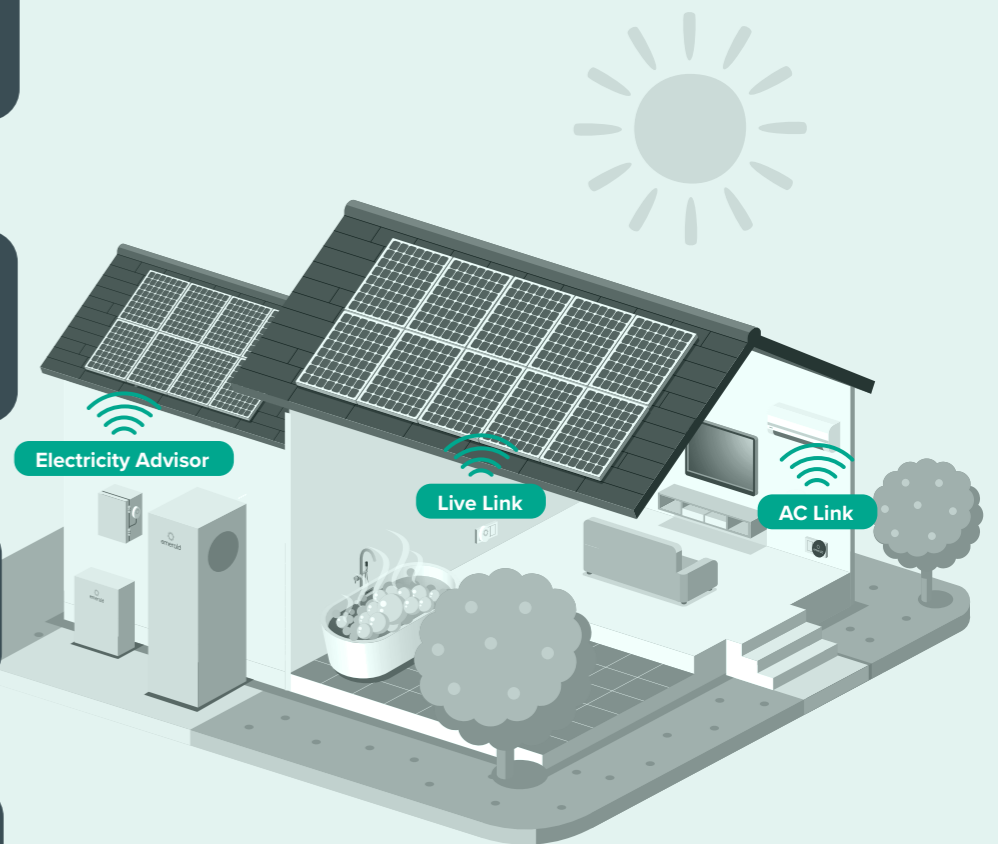
1 Excess solar
Emerald Electricity Advisor attaches to the smart meter and detects when excess solar is produced.

2 Solar Soaker
Activates via Emerald App connection.

Hot water heat pump
Turns on Emerald heat pump to heat hot water for free.

Air conditioning
Turns on air conditioning for free climate control.

Solar battery storage
Sends excess solar to storage battery.



Find out more

Control air con anywhere, anytime with AC Link

Engineered for complete control

Efficiency and energy savings with AC Link and Emerald App.

Set temperature, Smart Actions, fan mode, heat or cool via AC Link and Emerald App.

Geolocation detection to automatically turn off your air conditioning when you're not home.

Connect multiple phones to AC Link so you never lose the remote again.



Optional Emerald AC Link



Manage all your installs with Emerald Network

Emerald Network lets you manage all your Emerald products, sites, and customer info in one place. With notifications and advanced troubleshooting, it reduces downtime and ensures smooth operation effortlessly.

Real-time monitoring

Track installations across all sites as they happen. Get instant visibility to respond quickly and keep operations running smoothly.

Improved customer support

Get 24/7 error alerts and full error history. Resolve issues faster and keep customer disruptions to a minimum.

In-depth analytics

Access key data like water temperature, energy use, and activity logs. Use insights to fine-tune performance and lower costs.

Centralised management platform

Assign and track installs by company and site. One platform for full oversight - no more juggling systems.





emerald

emerald.com.au